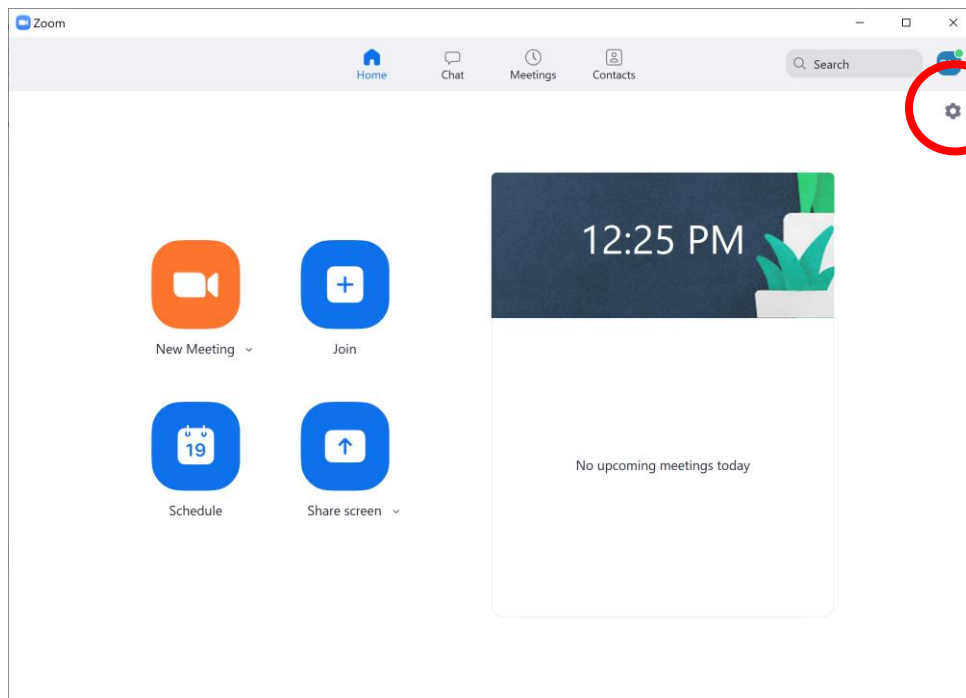
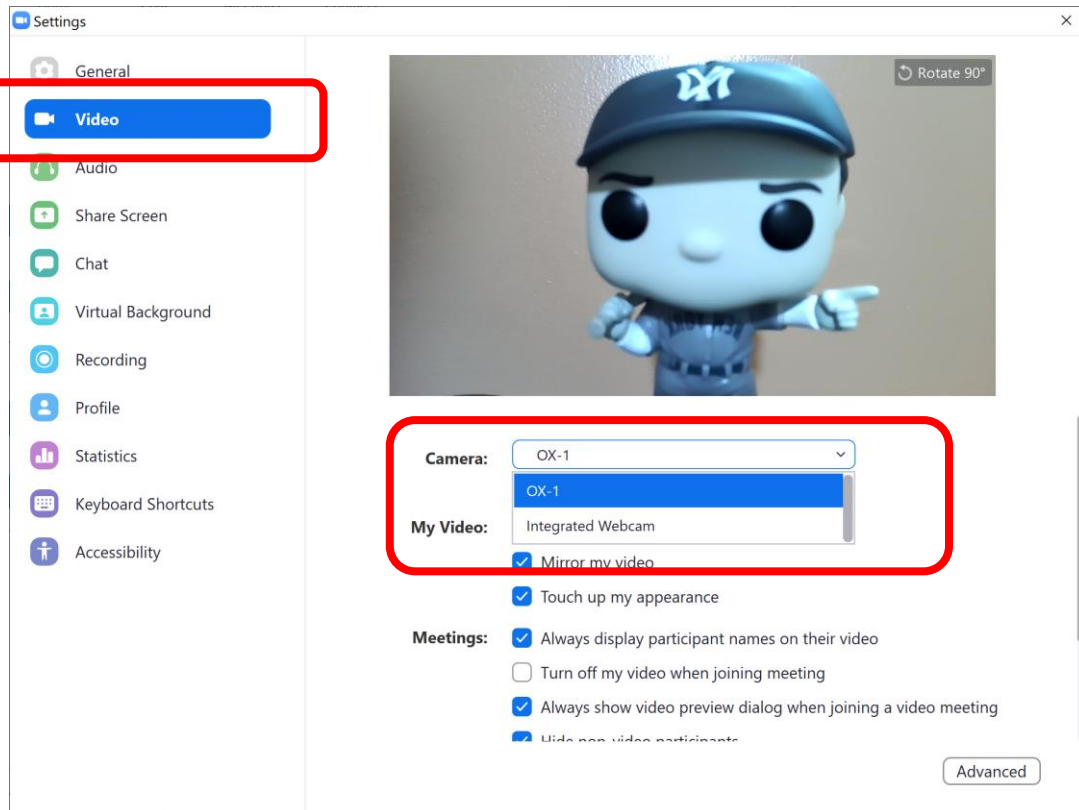

Using Your ELMO Document Camera with Zoom

This guide will cover the basic connections and setting required to use your ELMO Document Camera with Zoom. Not all ELMO Document Cameras will be able to be seen as a camera within Zoom. In this case, you will need to use the method noted in section 6c.

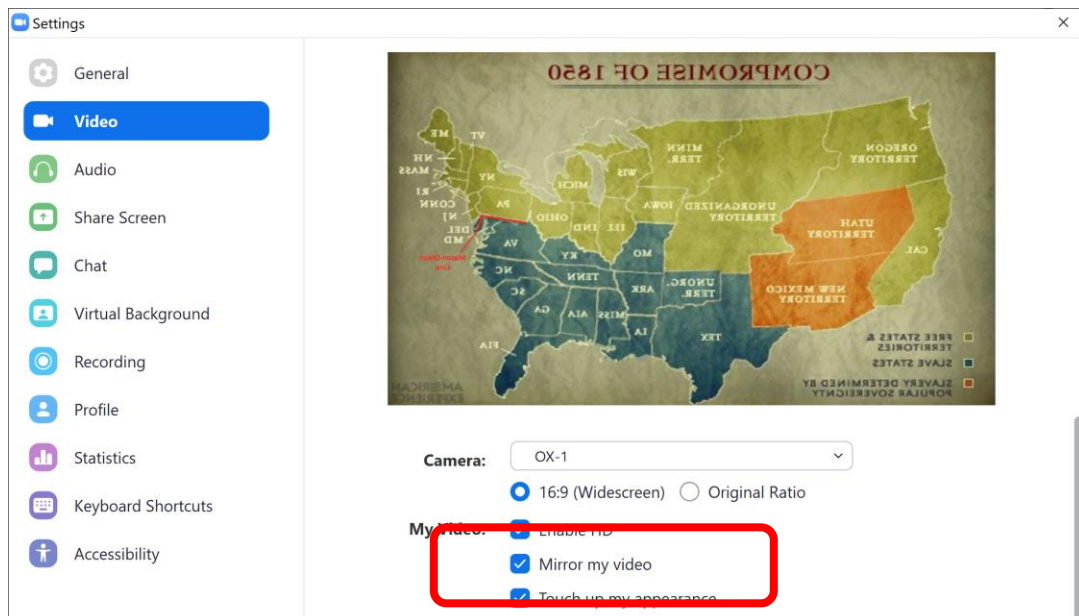
1. Connect the document camera to your computer using an appropriate USB cable.
2. Log in to your Zoom account.
3. Located the Settings icon in the upper right corner of the window.



4. Click on the Video menu in the left margin. You can now choose from available cameras.

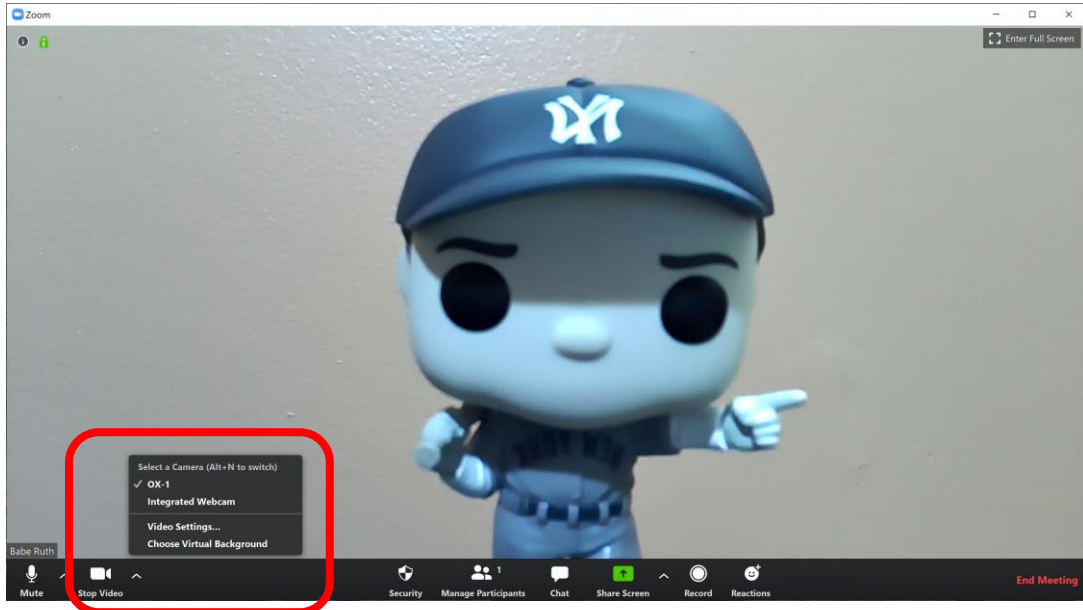


5. If you're using a document with images or text it may appear mirrored to you. You can adjust this setting by unchecking the option box. It will be correct to your audience regardless.

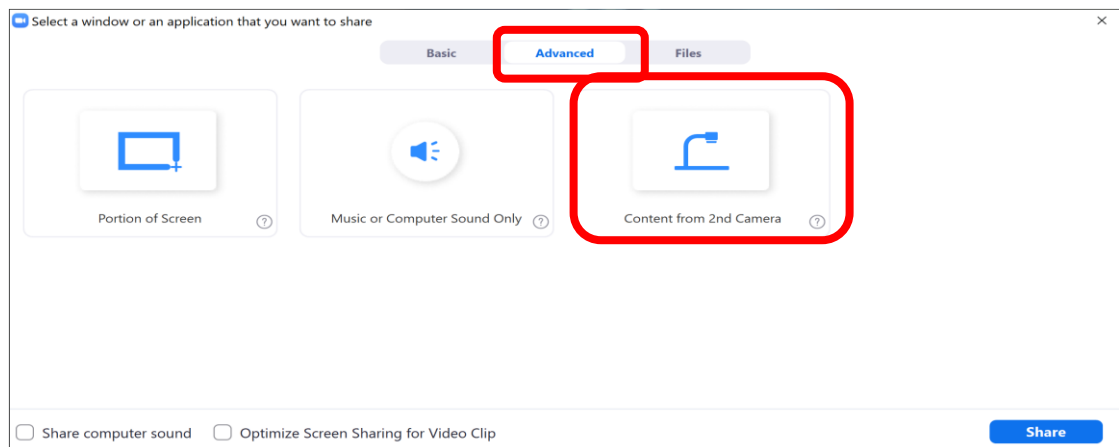
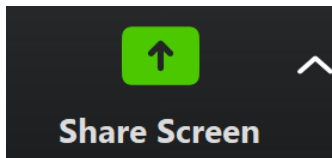


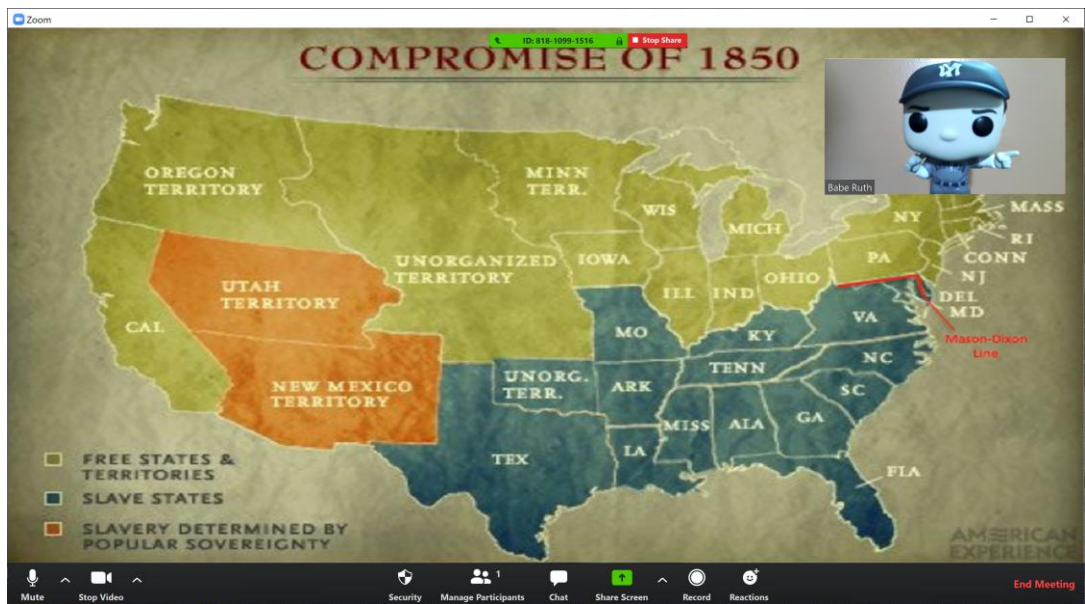
6. There are different options for presenting using Zoom.

- a. You can choose to show your webcam or the document camera by choosing in the camera tools menu.

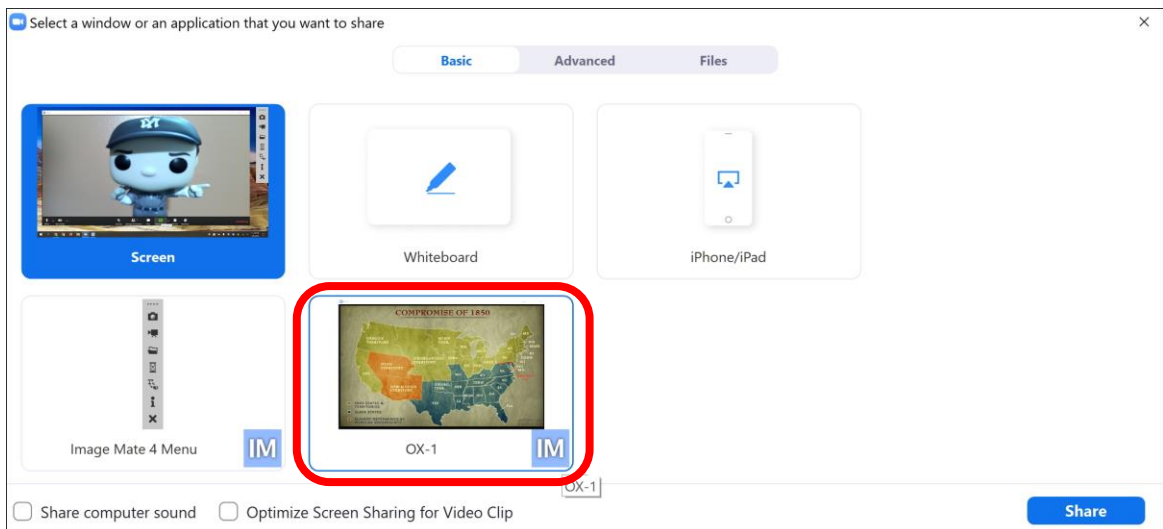
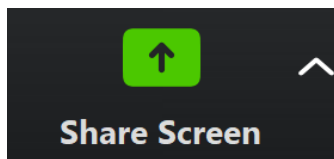


- b. Your audience can see both you and the content you're sharing with the document camera. Click on Share icon, Select the Advanced tab then select Content from 2nd Camera.





- c. Some older camera are not able to be recognized as webcams. For these you will require ELMO Image Mate or ELMO Interactive Toolbox software. Visit www.elmoussa.com/software for the appropriate software for your camera. Click the Share icon and choose the ELMO software window showing your content.



For assistance with any of these steps please reach out to ELMO Technical Support or your regional sales office.