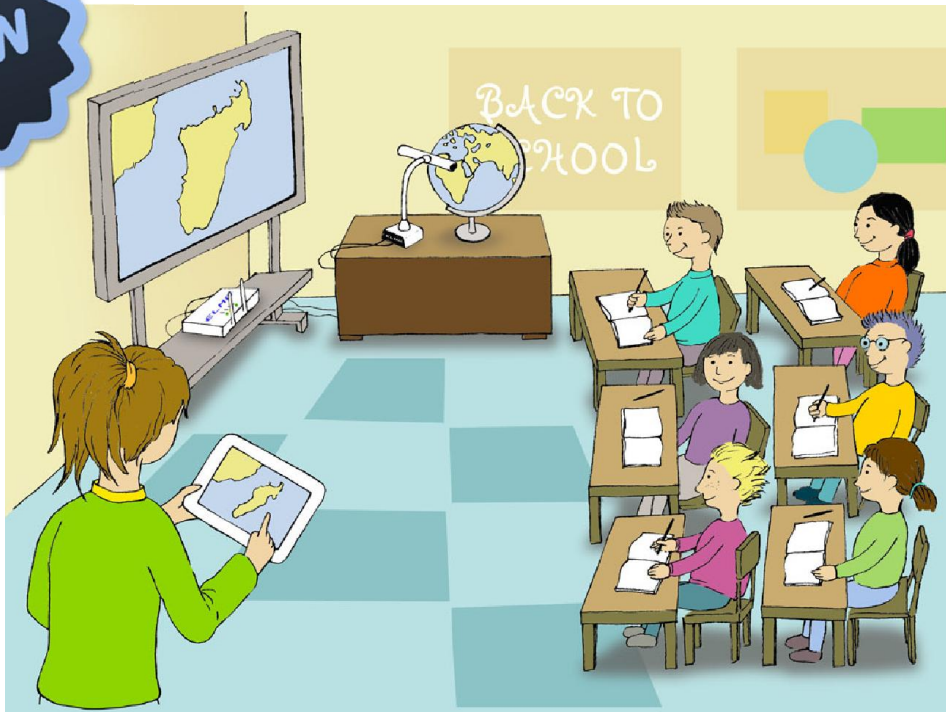


**ELMO Learning Interactive Technology [Elite]**  
+ **Interactive Communication Box (ICB)**  
= **ELMO ELITE-ICB**



**Increased Mobility**

**Wirelessly connect your iPad or Windows Tablet to a digital TV or projector**

Display the contents from the tablet wirelessly to a Digital TV or projector. The Teacher can walk freely around the classroom while conducting engaging lessons.



**Alternative to Traditional Interactive Whiteboard**

**With ELMO Interactive Toolbox (EIT) Software, the teacher's tablet acts as a portable Interactive Whiteboard**

EIT enables teachers to use their tablet to annotate on, manipulate and save content.



**ELMO Document Camera Integration**

**Wirelessly view the live image from your ELMO Document Camera**

Connect your ELMO Document Camera via USB to your ICB. The live image will be displayed within the ELMO Interactive Toolbox. ELMO Interactive Toolbox also allows for control of your ELMO Document Camera.

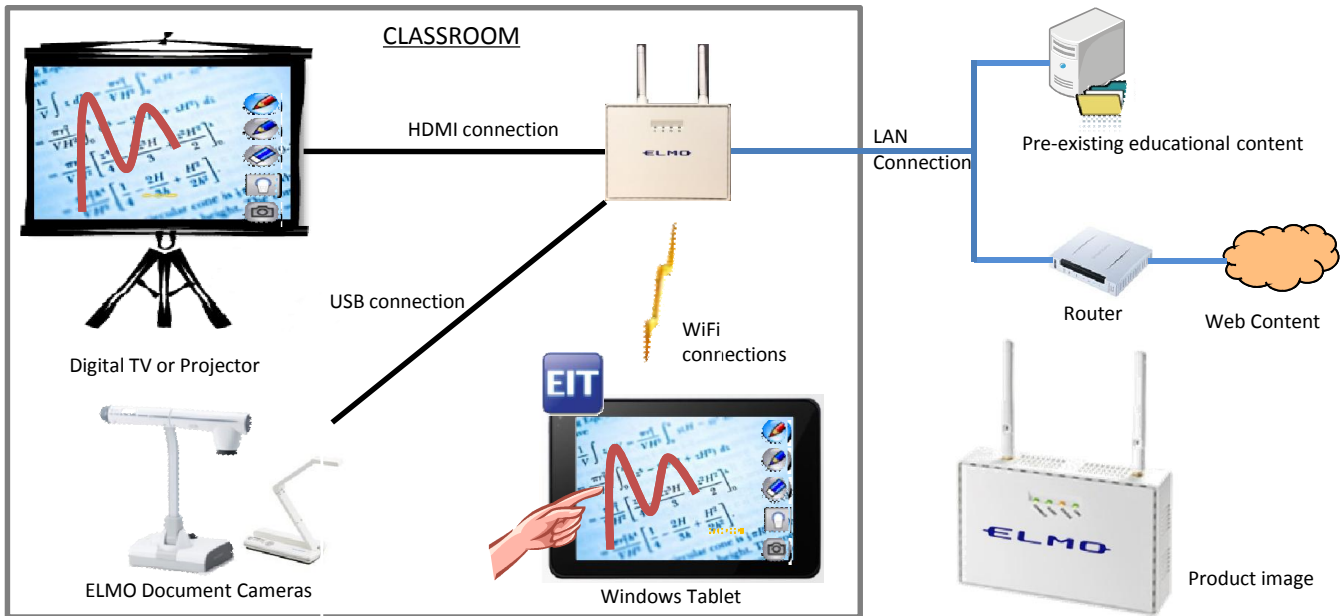


**Wider Connectivity**

**ICB can be used as a classroom WiFi access point (Max. 56 devices)**

EIT apps will be available in the near future (TBA).

## Connection



## Main Specification

ITEM #		
Wired LAN	Interface	CRI-1
	Standard	RJ-45 × 1 port (Auto MDI/MDI-X compatible)
	Security	IEEE 802.3compliance 10BASE-T/100BASE-TX/1000BASE-T MAC address filter
Wireless LAN Access point	Interface	802.11a/b/g/n 2T×2R (Theoretical figure: 300Mbps)
	Transmission	IEEE 802.11a 5GHz (modulation method: OFDM)
		IEEE 802.11b 2.4GHz (modulation method: DS-SS)
		IEEE 802.11g 2.4GHz (modulation method: OFDM)
		IEEE 802.11n (modulation method: OFDM)
		·MIMO (Multiple Input Multiple Output)
		·Aggregation features A-MPDU or A-MSDU
		·HT20/HT40 mode (high-throughput mode)
	Compatible channels	2.4GHz band 1~13ch 5GHz band W52/W53/W56 (W53/W56 compatible to DFS)
	Electric wave output setting	Ranging 5%~100% at 5% rate with 20 settings are possible
Band Control	Comply to QoS	
Max. number of units can be connected	56 units	
Multi SSID	2	
Security (Authentication)	Open, Shared, WPA-PSK, WPA2-PSK, WPA/WPA2-PSK (MIX) mode, 802.1x, WPA-Enterprise WPA2-Enterprise, WPA/WPA2-Enterprise (MIX) mode	
Security (Encryption)	AES, TKIP, AUTO, WEP(64/128bit)	
Security (others)	SSID Confidentiality feature (stealth SSID), Privacy separator, MAC Address filter	
Smart wireless setting	Smart Wireless setting for a secondary set with pushbutton with PIN Code, External registrar compatible	
Image transmission function	Interface	HDMI × 1port
	Display Resolution	Max resolution : Full HD (1920 × 1080)
	Display Function	Mirror mode (Duplication)
USB	Interface	USB2.0 × 2Port (USB Virtual Link Technology@built in) connectivity with Elmo document cameras (TT-12iD/TT-12/TT-12/TT-02RX/P30HD/P100HD)
Other	Push buttons	Two built-in (Set: Smart Wireless Settings / Reset: Restore Factory Settings)
	Compatible OS	Windows 7, Windows 8, Windows 8.1
	Compatible Software	EIT (ELMO Interactive Toolbox)
	Dimensions	120mm × 155mm × 32mm (excluding the antennas)
	Packaged Contents	CRI-1, AC Adapter, Manual, Rubber feet(4), CD-ROM(EIT Software)

\* Product specifications are subject to change without notice.



ELMO USA Corp. (Headquarters)  
1478 Old Country Road  
Plainview, NY 11803

**1-800-947-3566**  
www.elmousa.com  
www.elmoustore.com

ELMO USA Corp. (West Coast)  
5555 Garden Grove Blvd #375  
Westminster, CA 92683