



ELMO

TT-02s and SMART

Instructions for using the ELMO TT-02s with SMART Interactive White Boards

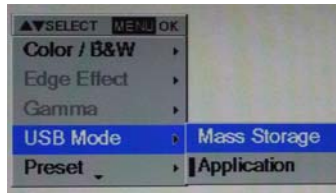
- The first step in the process is to connect your ELMO TT-02s to your LCD projector using the RGB out from the ELMO TT-02s to the RGB in on your LCD projector.

Connect the analog RGB cable to the [RGB OUT] terminal and connect the DC plug of AC adapter to [DC IN 12V] terminal.

P.20



- The next step is to turn on the projector and the ELMO TT-02s, then select the menu on the ELMO TT-02s. Scroll down to **USB Mode** by using the up and down arrows. Then click the right arrow to display **Mass Storage/Application**, now use the down arrow to highlight **Application**. Select **Application** mode by pressing the menu button, then press menu once more to clear it from the screen.



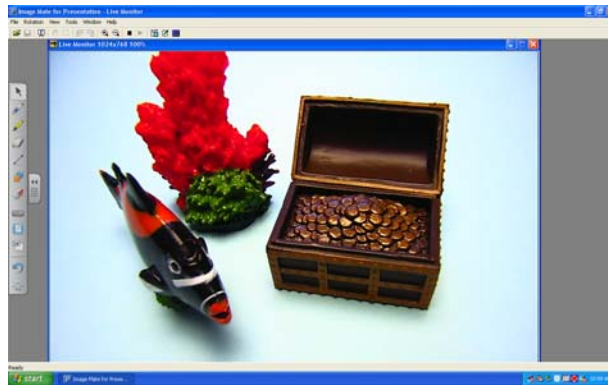
- After you have the TT-02s in Application Mode you need to install the Image Mate software that came with your ELMO TT-02s. Once the software is installed, connect the ELMO TT-02s to your PC with the provided USB cable. Your PC should now bring up the new hardware wizard and will install all the drivers for the ELMO TT-02s. Your ELMO TT-02s is now ready to work with your PC and interactive whiteboard.

- Launch the software and press the play button on the tool bar.



(Image Mate for Presentation tool bar)

- After pressing the play button you will see a live image from the camera (shown below).



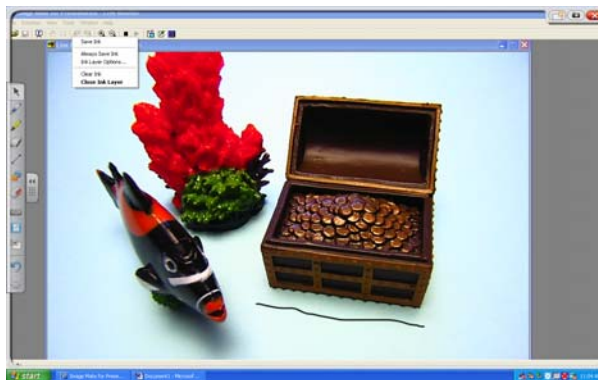
(Image Mate for Presentation in full screen mode)

- When you pick up a pen from the SMART Board interactive whiteboard pen tray the image becomes an ink layer and you can now draw on it.



(Image Mate for Presentation in an ink layer)

- When you return the pen to the tray and you touch the board it will give you the option to save the image with the ink layer.



(Smart ink layer)

- After you save the ink layer it will be in the Notebook 10 software in a new page.
- To access your TT-02s from within the Smart Notebook software, open Smart Notebook software and from the toolbar, select insert image from scanner. When the dialog box appears, select the ELMO TWAIN DS (VHO) driver from the drop down menu. A preview window will now open – click on the “Play” button and the live image from the TT-02s will show in the live preview window.

ELMO

FOCUS ON THE FUTURE

www.elmoussa.com